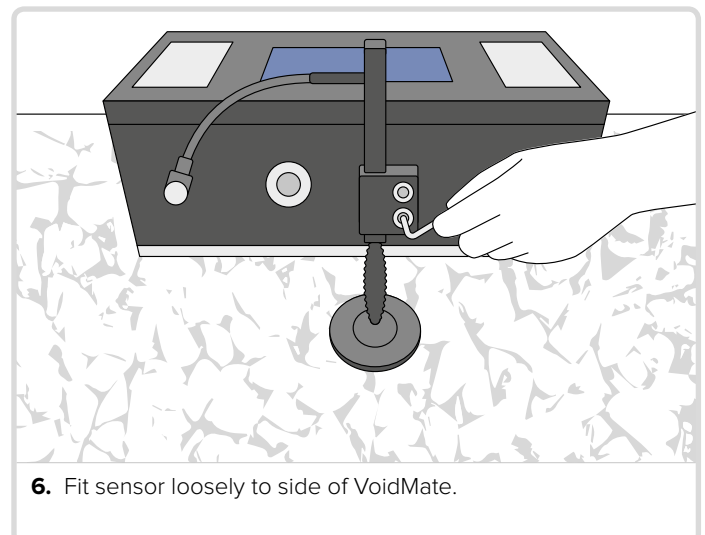
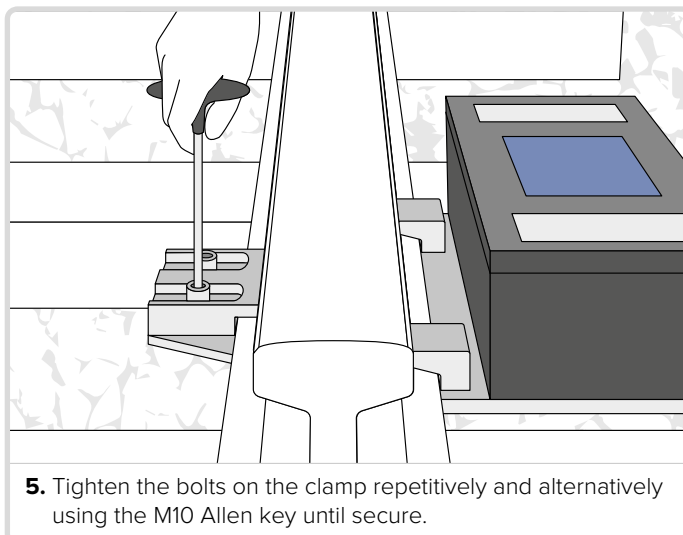
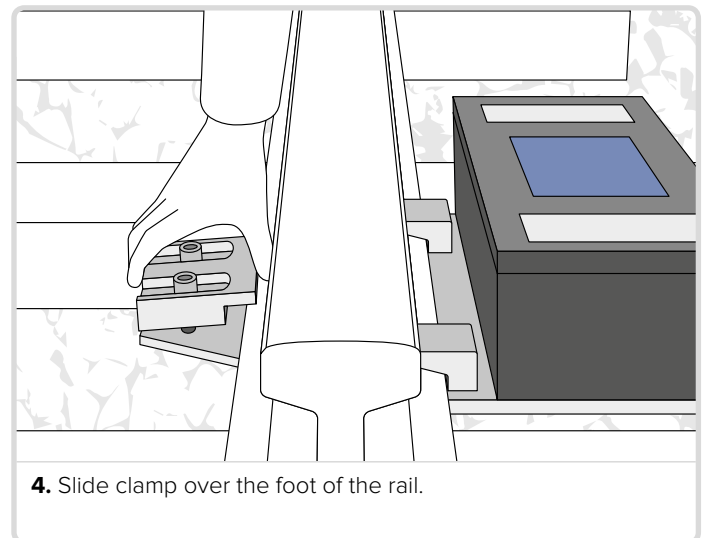
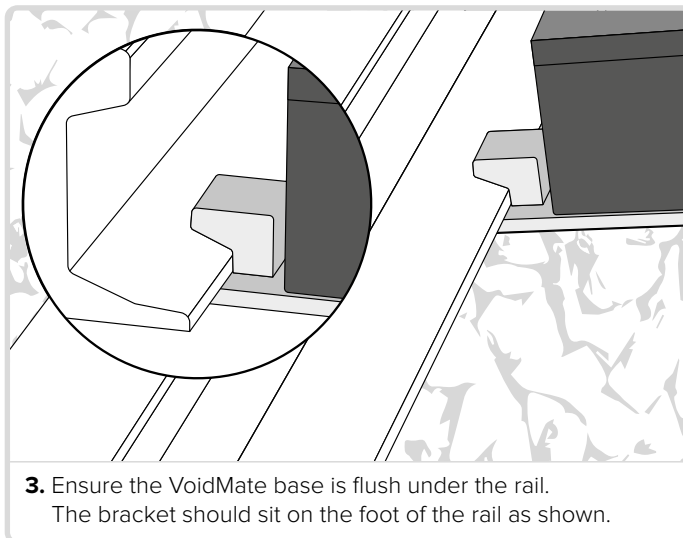
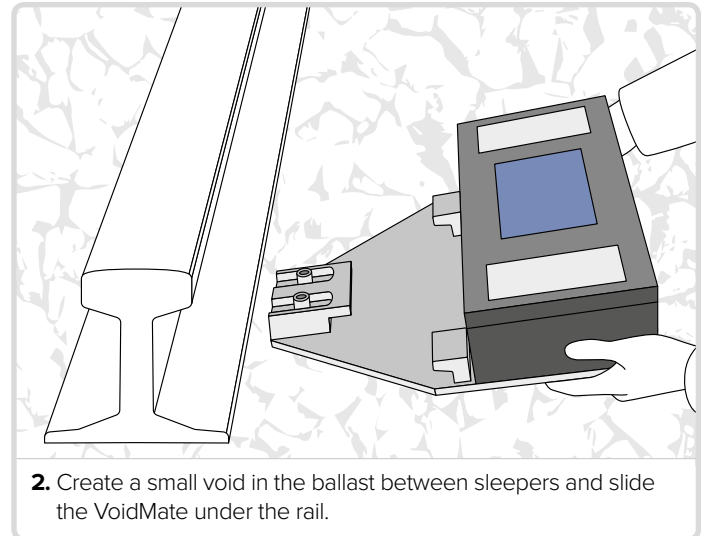
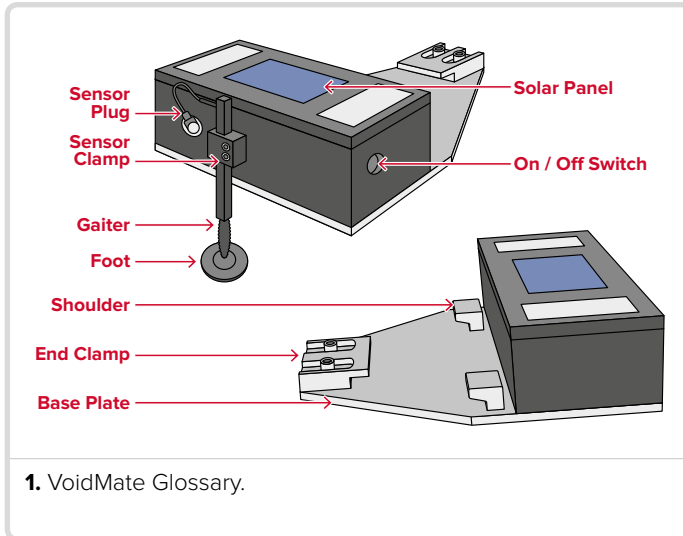
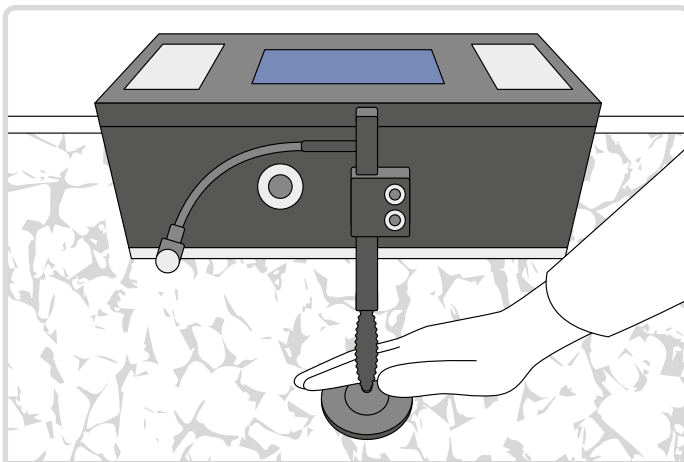




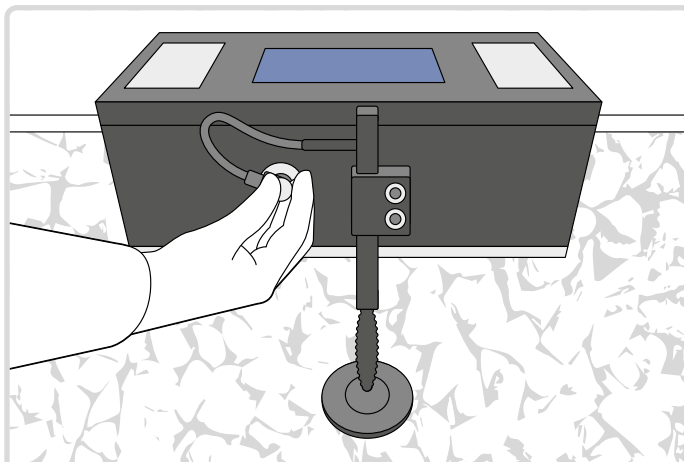
VoidMate

TRACK VOID MONITOR

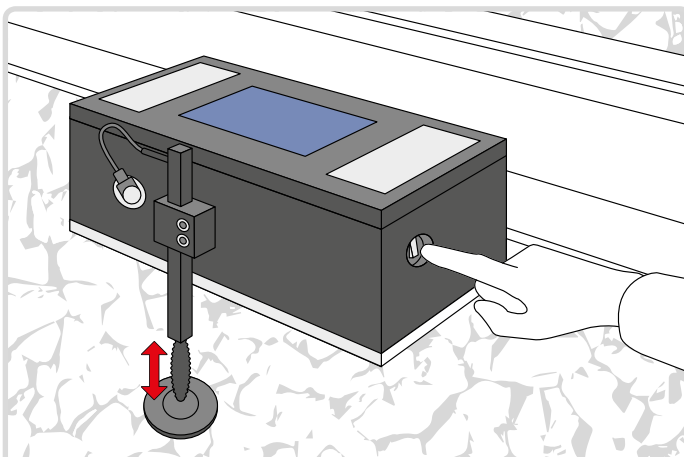




7. Position sensor to sit halfway in its travel range, remove or add ballast as necessary.



8. Insert sensor plug and screw in finger tight.



9. Once fitted check sensor is free to move and switch on the VoidMate.

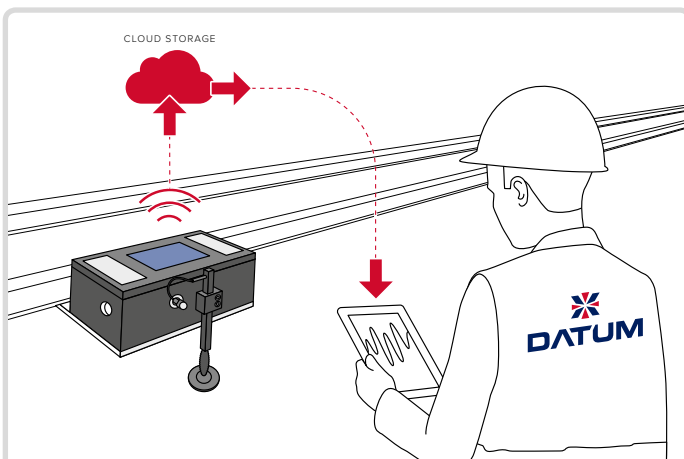


**Call Datum
24/7 Helpline:
0845 600 2511**

- ☒ Serial Number
- ☒ Company Name
- ☒ Site Location
- ☒ Alarm Limit
- ☒ Alarm Recipients



10. Call Datum 24/7 Helpline to ensure device is connected. Provide them with the information listed.



11. The VoidMate will continuously stream information via Platform Interactive.

Removing the VoidMate

- 1.** Switch off the VoidMate.
- 2.** Fully unscrew sensor plug.
- 3.** Loosen sensor clamp and detach from VoidMate.
- 4.** Loosen and open the end clamp.
- 5.** Remove the Voidmate.

CONTACT DETAILS

Head Office

Datum House
The Pavilions
Bridge Hall Lane
Bury, Lancashire
United Kingdom
BL9 7NX



+44 (0) 161 797 5511



info@datummonitoring.com



www.datummonitoring.com



@TheDATUMGroup



@DatumMonitoring

