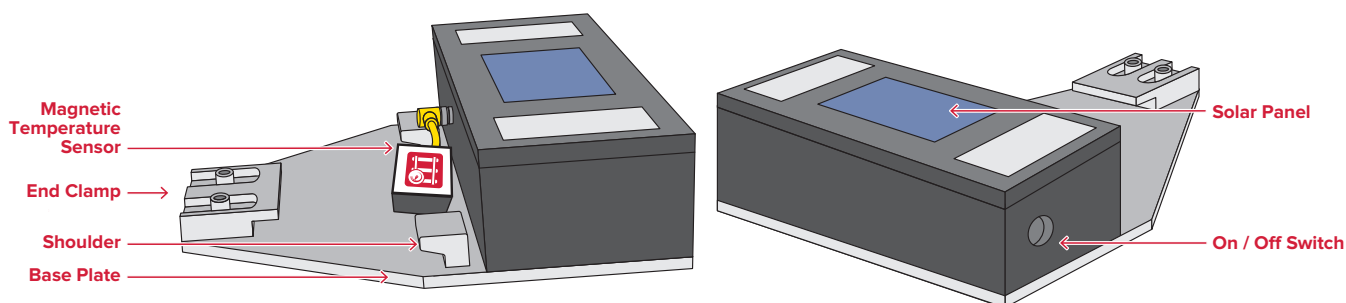
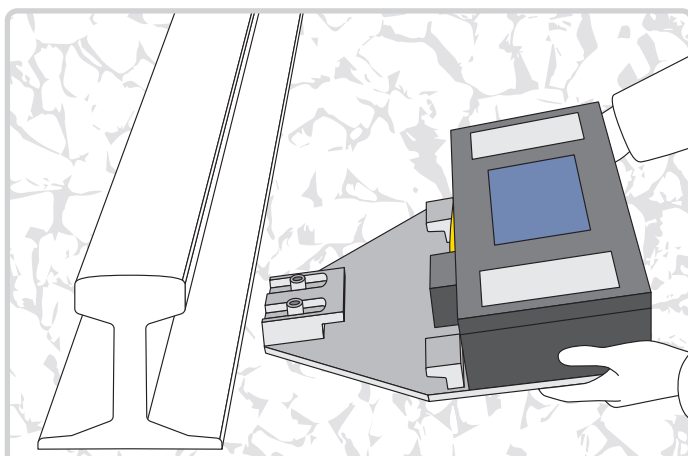




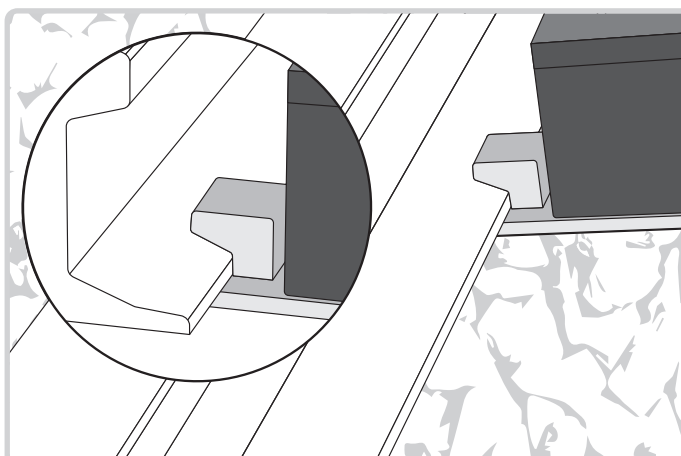
RailtempMate
CRT MONITOR



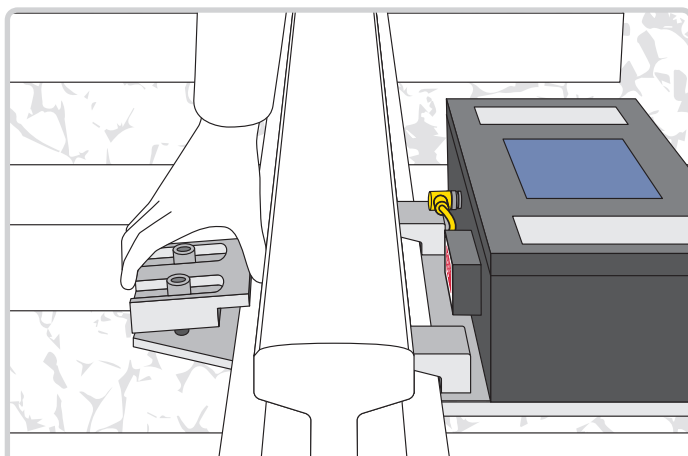
1. RailtempMate Glossary.



2. Create a small void in the ballast between sleepers and slide the RailtempMate under the rail.



3. Ensure the RailtempMate base is flush under the rail. The bracket should sit on the foot of the rail as shown.



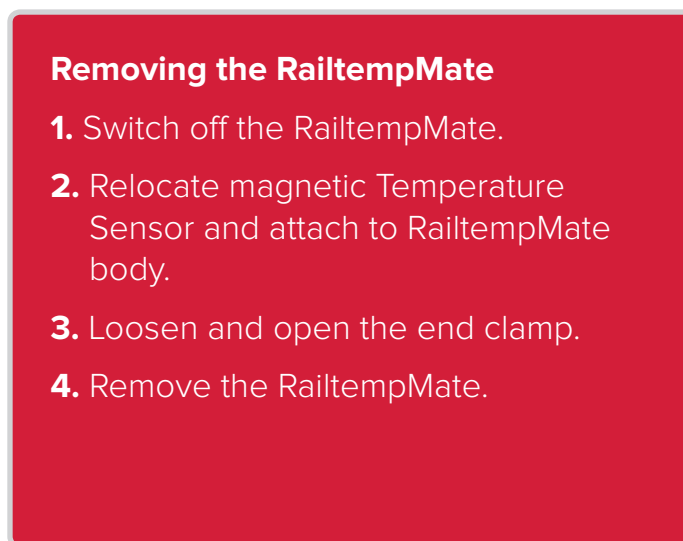
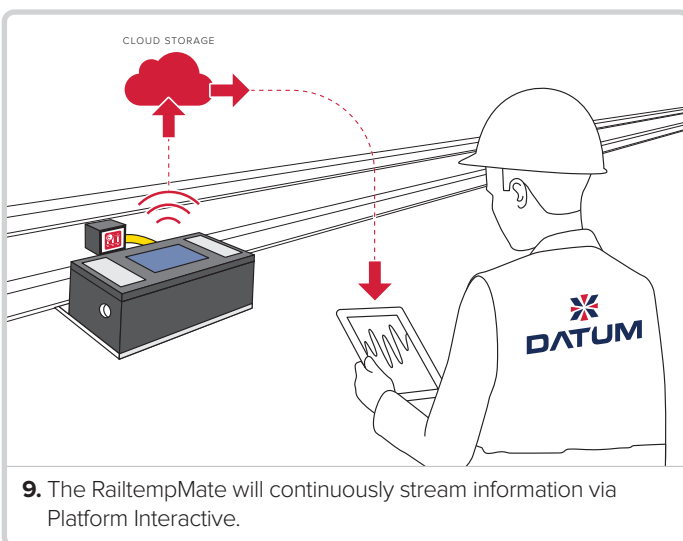
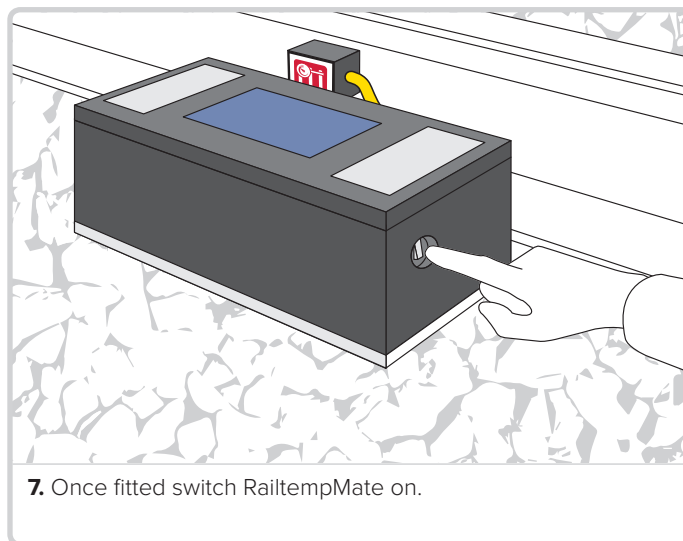
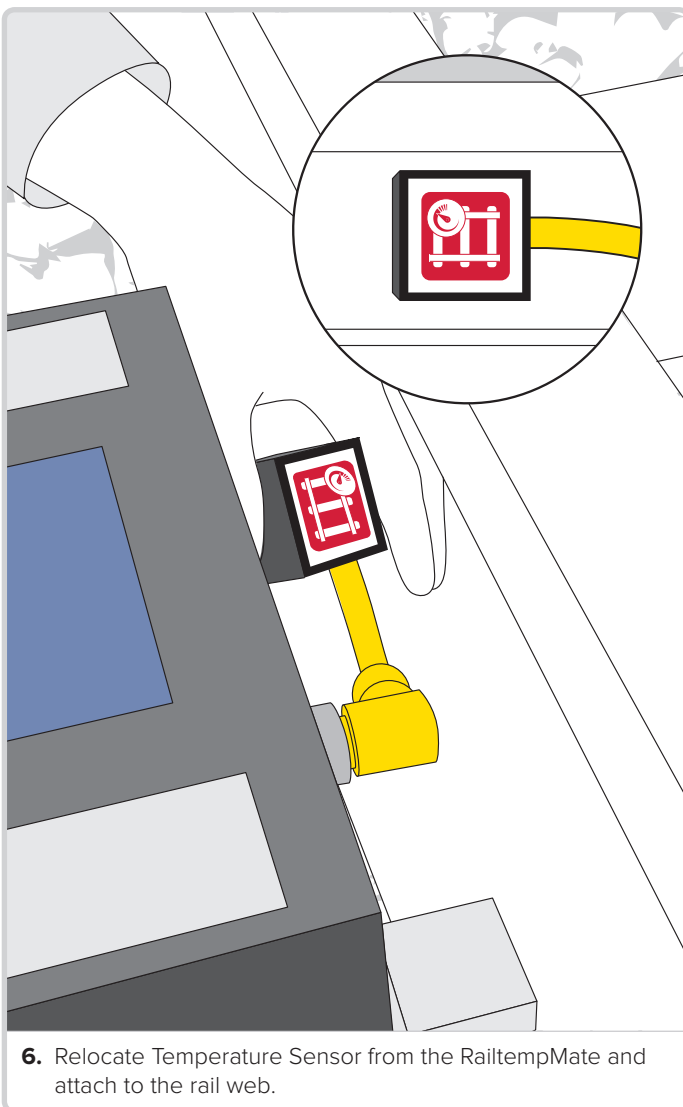
4. Slide clamp over the foot of the rail.



5. Tighten the bolts on the clamp repetitively and alternatively using the M10 Allen key until secure.

24/7 Helpline: 0845 600 2511

datum.helpdesk@datummonitoring.com



CONTACT DETAILS

Head Office

Datum House
The Pavilions
Bridge Hall Lane
Bury, Lancashire
United Kingdom
BL9 7NX

- +44 (0) 161 797 5511
- info@datummonitoring.com
- www.datummonitoring.com
- @TheDATUMGroup
- @DatumMonitoring